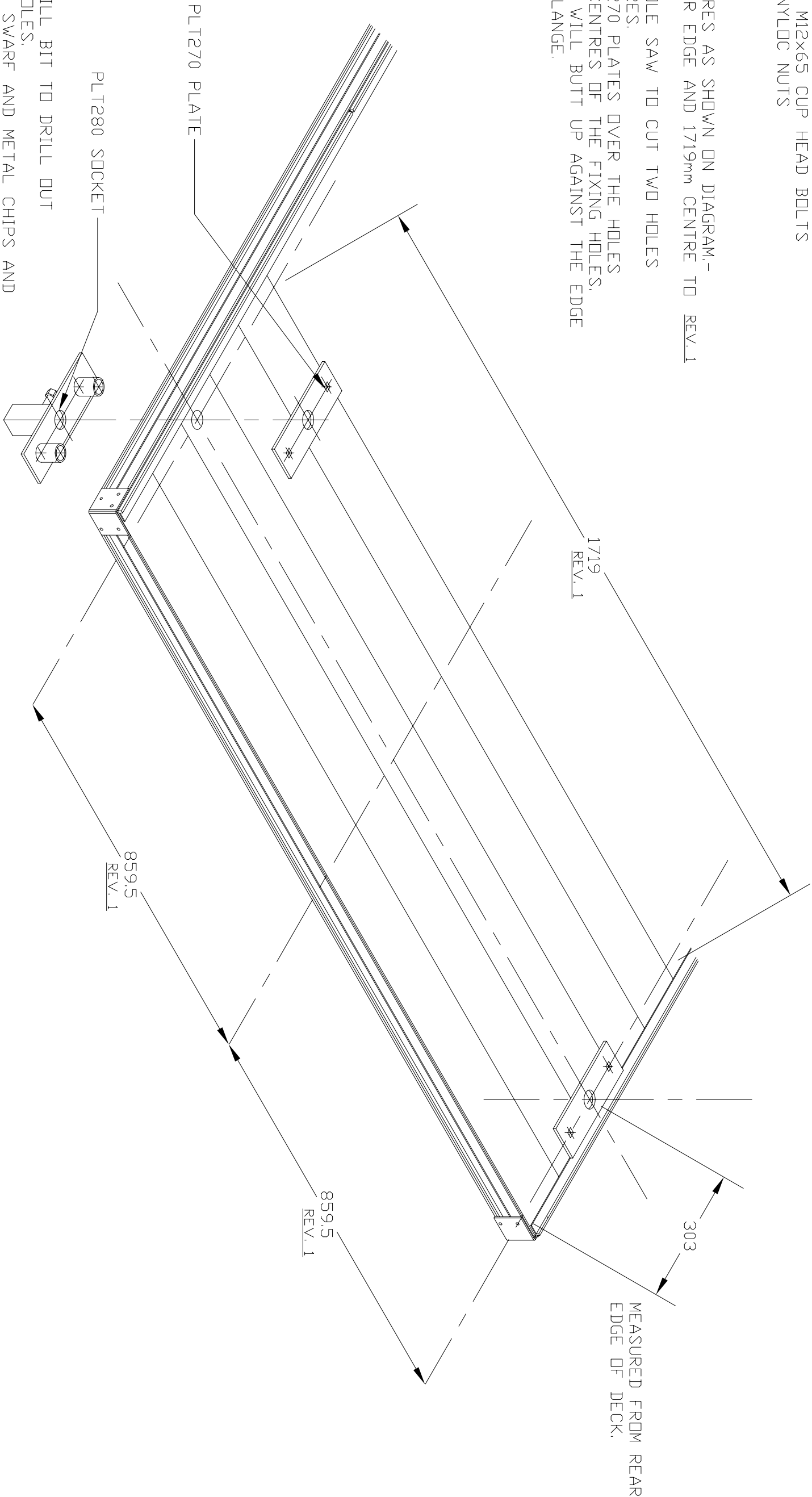


PARTS SUPPLIED:

- 1 OF RK380 40mm REAR LADDER RACK ONLY
- 2 OF PLT270 PLATE TRAY REAR L/RACK TOP
- 2 OF PLT280 PLATE TRAY REAR L/RACK BOTTOM
- 4 OF BLTCHZP1265 M12x65 CUP HEAD BOLTS
- 4 OF NUT12N M12 NYLDC NUTS

TO FIT

- 1 MARK HOLE CENTRES AS SHOWN ON DIAGRAM,- 303mm FROM REAR EDGE AND 1719mm CENTRE TO CENTRE.
- 2 USE A 37mmØ HOLE SAW TO CUT TWO HOLES ON THESE CENTRES.
- 3 PLACE THE PLT270 PLATES OVER THE HOLES AND MARK THE CENTRES OF THE FIXING HOLES. NOTE: THE PLATES WILL BUTT UP AGAINST THE EDGE OF THE COAMING FLANGE.



- 4 USE A 1/2"Ø DRILL BIT TO DRILL OUT THE 4 FIXING HOLES.
- 5 BLOW AWAY ANY SWarf AND METAL CHIPS AND REPLACE THE TOP PLATES.
- 6 DROP THE 4 M12 CUP HEAD BOLTS INTO THE HOLES ENSURING THE SQUARE SHANKS ARE ENGAGED IN THE SQUARE HOLES.
- 7 WITH THE SHORT CRUSH TUBE AND THE CLAMP BOLT TOWARDS THE FRONT OF THE VEHICLE, SLIP THE PLT280 SOCKETS OVER THE BOLTS AND INTO PLACE UNDER THE TRAY, FIT THE NYLDC NUTS.
- 8 TIGHTEN ALL NUTS SECURELY.
- 9 FIT LADDER RACK FRAME RK380 INTO THE SOCKETS (NOTE: THE ENDS OF THE FRAME WILL USUALLY REQUIRE "SPRINGING" IN OR OUT TO GET THE SPIGOTS TO ENTER THE SOCKETS, THIS IS QUITE NORMAL).
- 10 TIGHTEN THE CLAMP BOLTS FIRMLY.

| REV |                                       |  | AMENDMENT | DATE     | INIT | PATH AND FILE  |  |   |
|-----|---------------------------------------|--|-----------|----------|------|--|--|---|
| B   | RE-FILE AND UPDATE TO NAVISION CODES. |  |           | 17/02/10 | B.C. | \\R&D main menu\Instructions\Fitting Manuals\Section-3 Troy Fitting\WP\3-1D Ladder rack positioning Iss B1 |  |   |
| 1   | REDUCE CENTRE TO CENTRE DISTANCE      |  |           |          |      | FLEXIGLASS CHALLENGE INDUSTRIESDwn.24/11/99 BY B.CONSTABLE QUALITY SYSTEM DRAWING                          |  | Title F.C.I. NEW TRAY LADDER RACK POSITIONING INSTRUCTIONS. |
| 1   | BY 26mm OVERALL AND ALTER NOTE        |  |           |          |      |  |  |   |
| 1   | TEXT TO REFLECT NEW POSITIONING.      |  |           | 20/04/10 | B.C. |  |  |   |
|     |                                       |  |           |          |      |  |  |   |
|     |                                       |  |           |          |      |  |  |   |
|     |                                       |  |           |          |      |  |  |   |
|     |                                       |  |           |          |      | ISS.B.1 Scale NTS  |  | DWG.3-1D Sh1:1  |